

## **Field Feature Bill of Material**

**PN 08J5496**

**Install Network Node Control Point (NNP-A)  
Feature Code 5122**

**on IBM 3746-900.**

Written by: J. Michaut  
Illustration by: S. Vaccaro  
Checked by: C. Franoux  
Approved by: A. Badino  
Reviewed by: B. Kelly

3746 FFBM	PN 08J5496 1 of 18	EC E46545A 07 MAY 97				
--------------	-----------------------	-------------------------	--	--	--	--



## Before Installation (Steps 1-8)

### 1.0 Machines Affected

3746 Model 900

*This feature should only be applied on the machine serial for which it is specified.*

### 2.0 Related BMs and ECs

#### 2.1 Prerequisites

(Must be installed prior to this installation)

**Feature**

**or EC**

**Title**

**5023** Controller Expansion (FB/M 29H4173)

**9018** Controller Bus and Service Processor Type 2 - (FB/M 59G0456), or

**5019** Controller Bus and Service Processor Type 2 - (FFB/M 58G5516).

**D46130** Microcode (Minimum Level)

**Checkpoint:** Check that the CSS 1 EC Level is D46130.000 or higher.

**Note:** Refer to *SPIM*, Chapter 3. *Displaying the EC Level of the Code*.

**5026** Hard Disk Drive Exchange (FFB/M 29H4179) (If Service Processor type 9577 only).

#### 2.2 Concurrent ECs

(Must be installed together)

None.

#### 2.3 Companion ECs

(May be installed together)

None.

## 3.0 BMs to be Installed

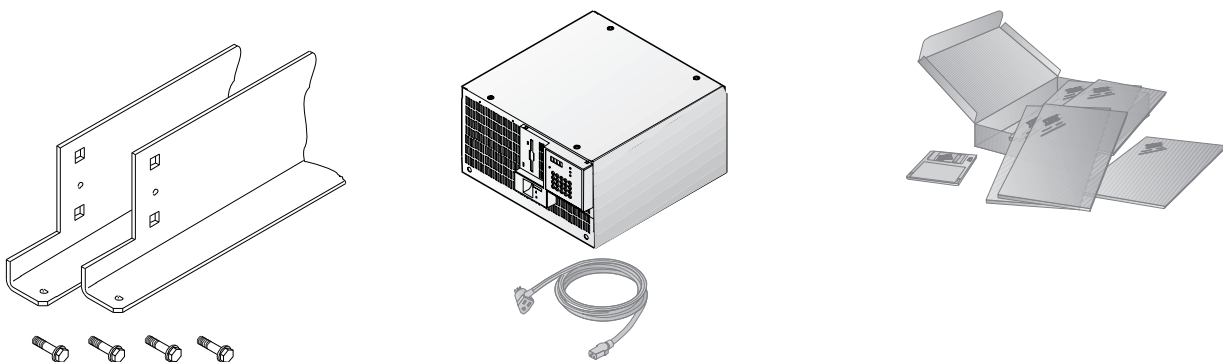
**FFB/M Title**

**08J5496** Network Node Processor A (NNP-A) Feature Code 5122

## 4.0 Preparation

1. Familiarize yourself with the purpose and details of the installation instruction before negotiating machine time with the customer.
2. Check all items listed on the BM(s) to determine that all parts have been received.

- ☐ Brackets (X2) and Screws (X4)
- ☐ NNP-B and Power Cord
- ☐ Publications and diskette



3. The set up of the NNP-A has no impact on customer operations.
4. Obtain from the customer the **Parameter worksheet**.

## 5.0 Programming

None.

## 6.0 Purpose and Description

## 6.1 Purpose

To support the APPN, X25, IP or ISDN operation on 3746-900.

## 6.2 Description

The installation of the NNP-A is divided into three main procedures:

1. Loading the Network Node Processor Code on the Service Processor
2. Installing the system unit
3. Loading the code on the network node processor

## 7.0 Installation Time

FFBM	Machine Hrs.	System Hrs.	Nbr of CEs
08J5496	0.0	0.0	1

**Note:** To reduce the MES installation time it is recommended that you load the Network Node Processor Code on the Service Processor and install the system unit at the same time.

No impact on 3745 customer operations.

## 8.0 Tools/Material Required

None.

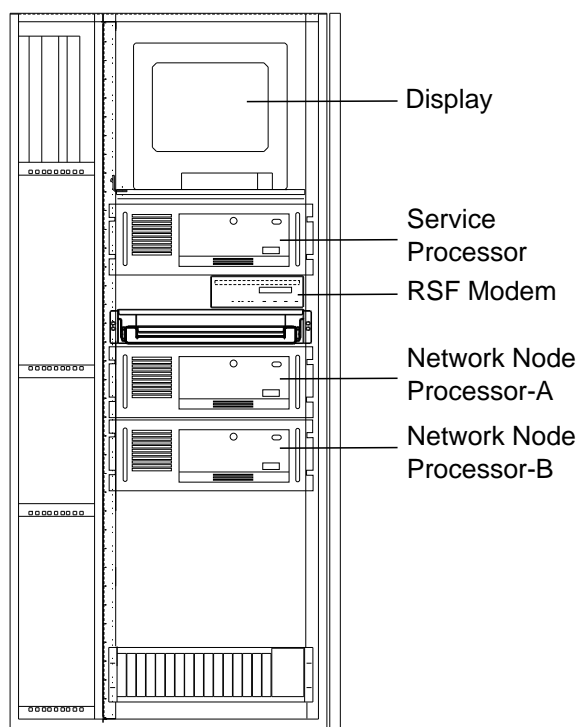


Figure 1. NNP-A installed with SP 7585.

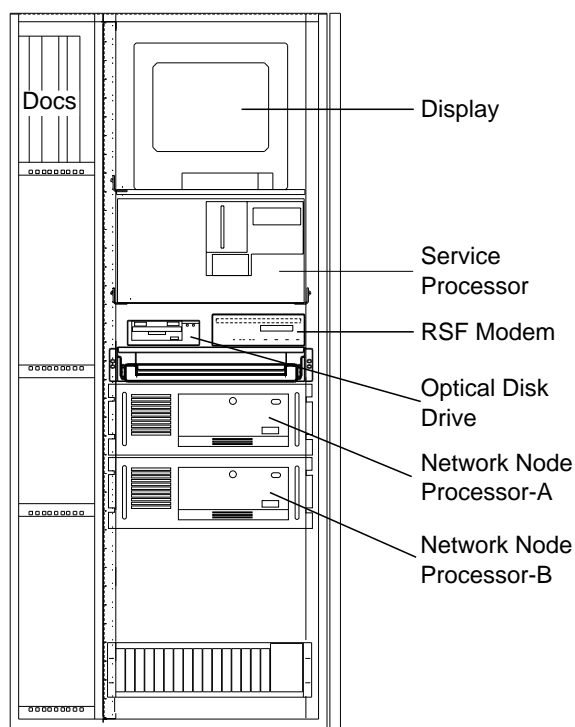


Figure 3. NNP-A installed with SP 3172.

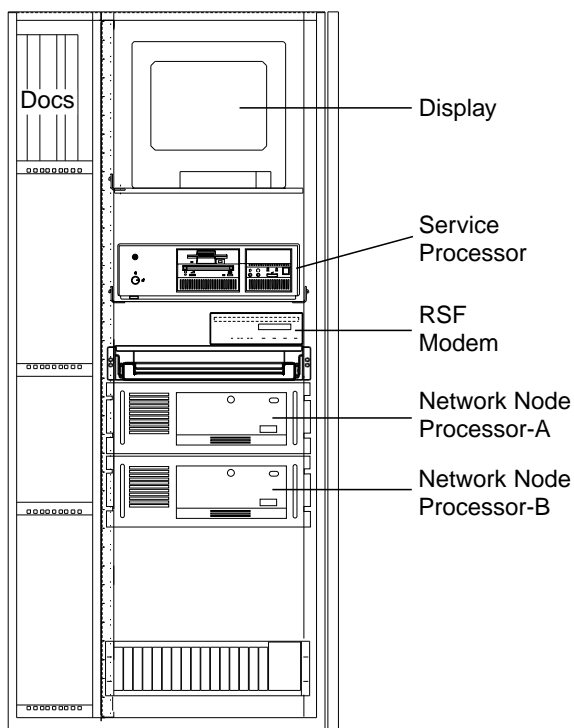


Figure 2. NNP-A installed with SP 9577.

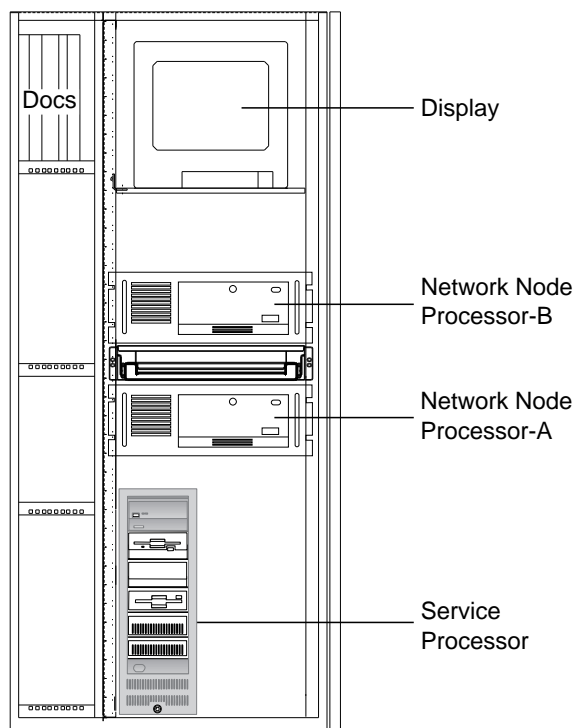
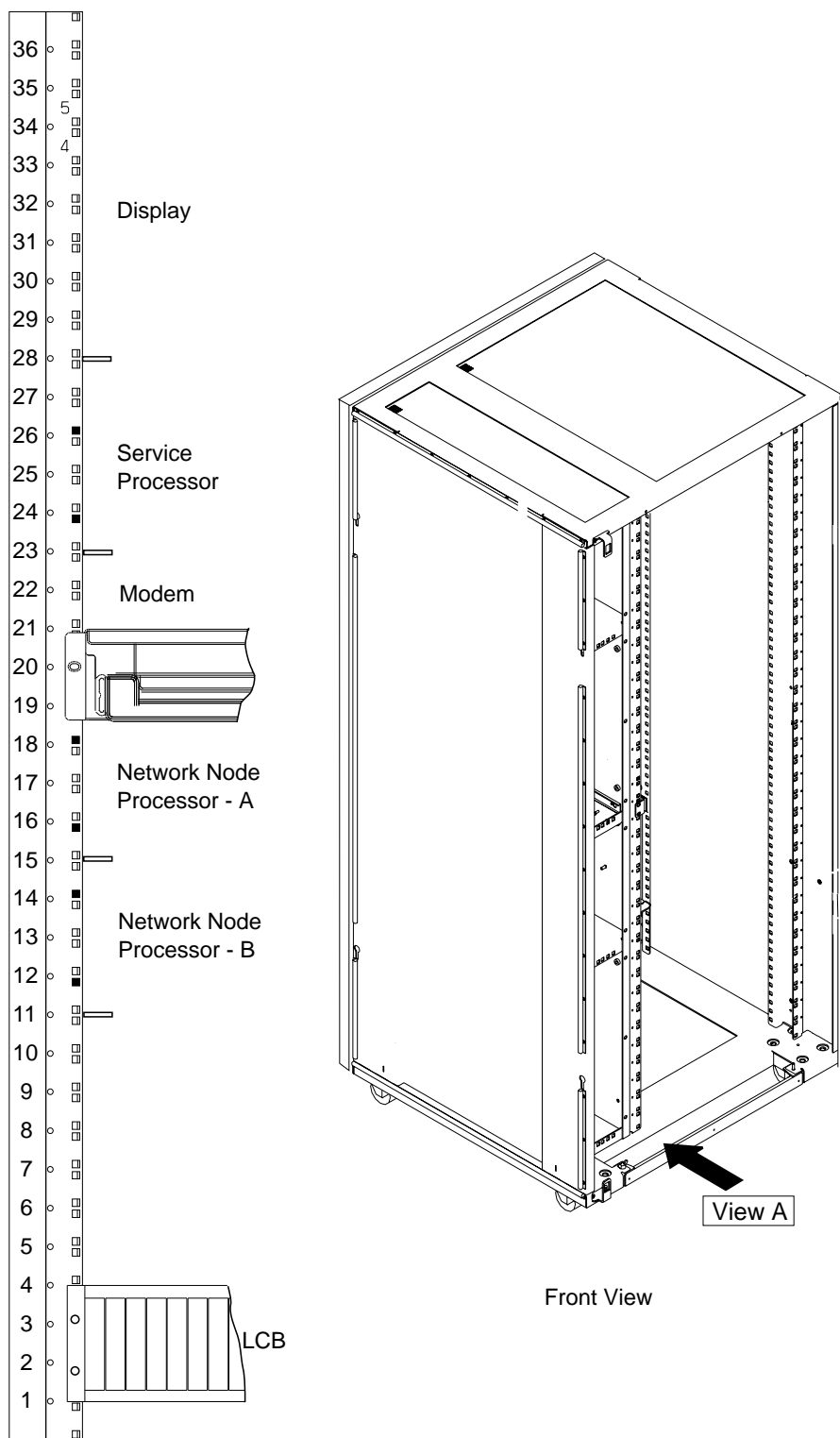


Figure 4. NNP-A installed with SP 9585.



View A

Figure 5. Installing Brackets for Processor Type 7585

3746 FFBM	PN 08J5496 7 of 18	EC E46545A 07 MAY 97				
--------------	-----------------------	-------------------------	--	--	--	--

## Installation (Steps 9-12)

### 9.0 Safety

Review the **Safety Notices** and the **Safety Inspection Procedures** located at the beginning of the *IBM 3745 Communication Controller All Models, IBM 3746 Expansion Unit Model 900, IBM 3746 Nways Multinetwork Controller Model 950 Safety Information, GA33-0400*.

### 10.0 Details of Installation.

#### 10.1 Loading the Network Node Processor Code on the Service Processor

##### Notes

For any unexpected message or error concerning the service processor, go to **Chapter 4. Problem Determination** of the:

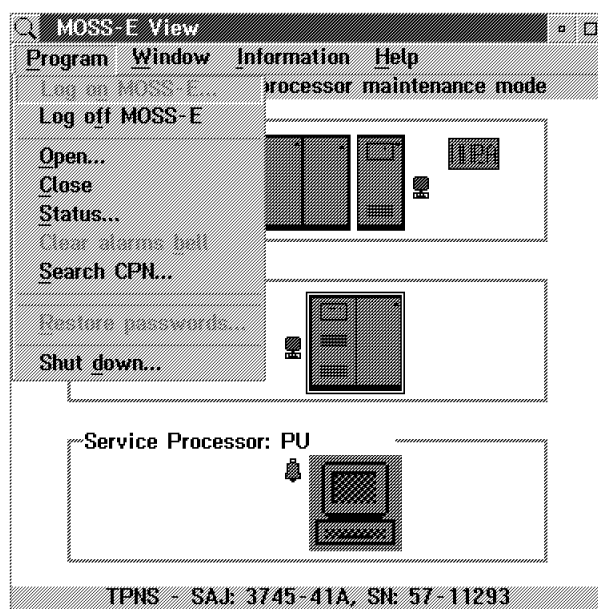
- *Service Processor Installation and Maintenance (Based on 7585, 3172, 9585, and 9577), SY33-2115, or*
- *Service Processor Installation and Maintenance Based on 3172, SY33-2111, or*
- *Service Processor Installation and Maintenance Based on PS/2 9585, SY33-2109, or*
- *Service Processor Installation and Maintenance Based on PS/2 9577, SY33-2095.*

1. **Shut Down and Power OFF the Service Processor** (If not already done):

**Note:** Before powering OFF the Service Processor, use this procedure to properly close all the active functions.

- a. On the "MOSS-E view" window click on **"Program"**.
- b. Click on **"Shut down"**.





- \_\_\_ c. Enter the Service Processor maintenance password (default is IBM3745). Then, click on "OK".
- \_\_\_ d. Power **OFF** the service processor.
- \_\_\_ 2. Install the **Service Processor installation diskette 1** in the Service Processor diskette drive.
- \_\_\_ 3. Power **ON** the service processor.
- \_\_\_ 4. Install the **Licensed Internal Code** optical disk, at EC D46130 or higher, in the Service Processor optical disk drive.
- \_\_\_ 5. On the first screen displayed, press "Enter"
- \_\_\_ 6. From the primary window select option **5** (**Update Licensed Internal Code when installing a Network Node Processor**).

Then, press "Enter" to start the process then follow the prompts.

Service Processor Installation Main Menu

---

Select one of the following options using ↑ and ↓ or tab keys,  
then press Enter:

1. Update Licensed Internal Code (LIC) when installing a 3746-9XX
2. Update Licensed Internal Code
3. Restore hard disk
4. Save hard disk
- 5.** Update Licensed Internal Code when installing a Network Node Processor
6. Exit

Enter

- \_\_\_ 7. Wait (Up to 45 minutes) for the message: **Operation successfully completed.**

**Note:** If you have two 3746-9x0s connected to the same Service Processor, using the arrow keys, select the target 3746-9x0 code to be updated, and pressing the space bar, specify if you want to update the code for the selected 3746-9x0 (by default the two 3746-9x0 are selected).

- \_\_\_ 8. At the end, select "**Exit**" from the primary window and follow the prompts.

Service Processor Installation Main Menu

---

Select one of the following options using ↑ and ↓ or tab keys,  
then press Enter:

1. Update Licensed Internal Code (LIC) when installing a 3746-9XX
2. Update Licensed Internal Code
3. Restore hard disk
4. Save hard disk
5. Update Licensed Internal Code when installing a Network Node Processor
- 6**. Exit

Enter

## 10.2 Installing the System Unit

- \_\_\_ 1. Open the front and rear doors of the Controller Expansion.
- \_\_\_ 2. Locate the location to install the NNP-A in the Controller Expansion (Refer to Figure 1 on page 6 to Figure 4 on page 6).
- \_\_\_ 3. Install the right and left brackets **1** (PN 58G5752), provided with the FFB/M, in the controller expansion. Then. tighten using the four screws (p/n 2665527 **2** (See Figure 6 on page 11).

**Note:** If some brackets are already install in the position where the NNP-A must be install, remove those left and right brackets.

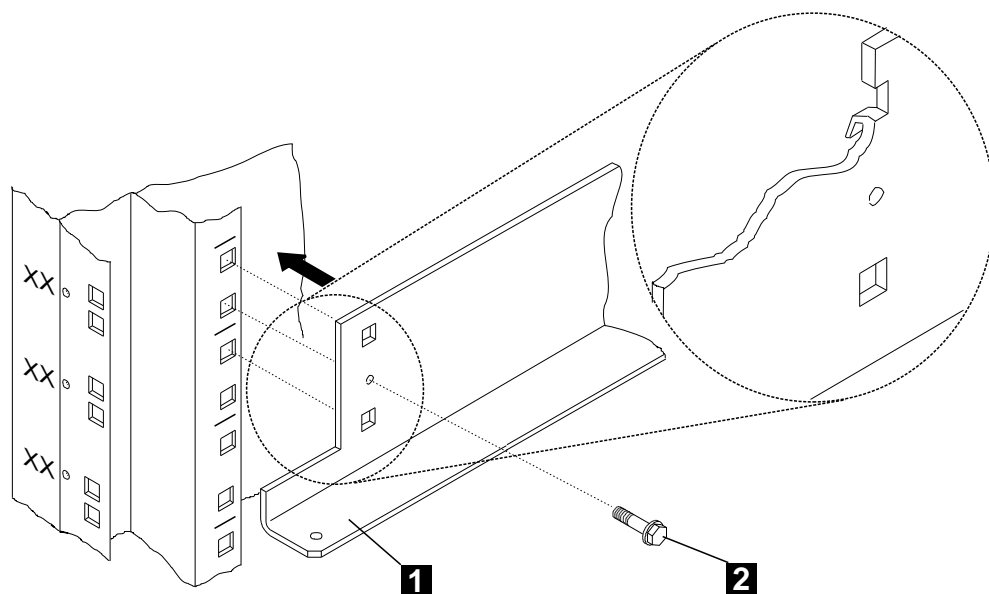


Figure 6. Installing the NNP-A Brackets

- 4. Install four captive nuts (PN 58G5766) on the left and right side of the controller expansion (Refer to Figure 5 on page 7).

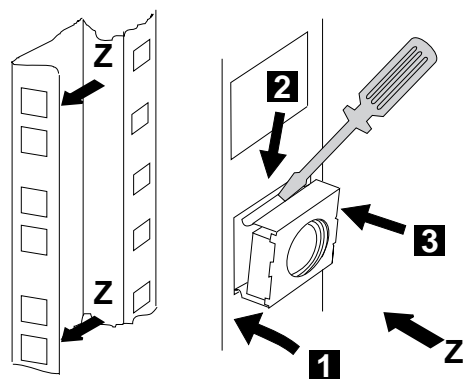


Figure 7. Installing the Captive Nuts.

- 5. Slide the network node processor unit in the controller expansion from the front side as shown in Figure 8, then fasten the unit using four screws (PN 1621230).

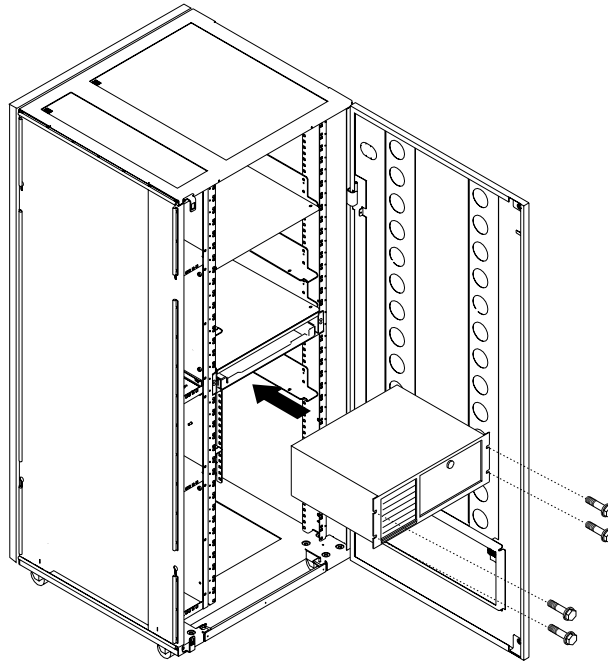


Figure 8. Installing the 7585 NNP-A Unit in the Controller Expansion (Front Side)

- 6. Using label (PN 0792966), **identify** your Network Node Processor-A by sticking the appropriate label **A** on the front and rear side of the unit.

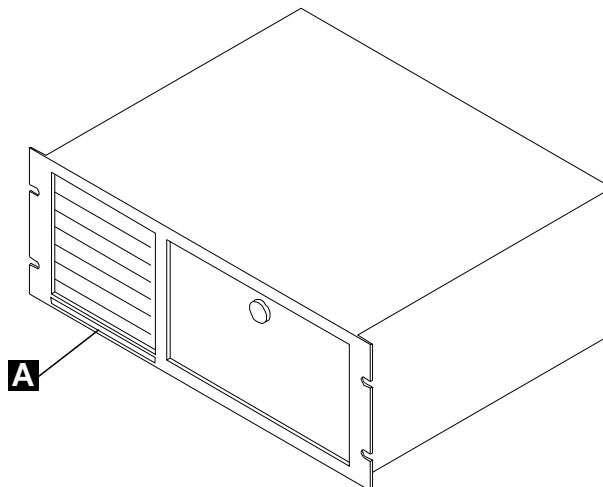


Figure 9. Installing Label on the Front Side of the Network Node Processor.

## 10.3 Connecting the NNP-A.

- \_\_\_ 1. Plug connector **1** of cable **A** (PN 6339098) to the token-ring card connector.
- \_\_\_ 2. Using a sticker, identify the cable **A** as the "network node processor cable" and plug connector **2** to **any plug** of the 8228 from **1 to 8**
- \_\_\_ 3. Connect power cord **3** from J2 to the ac outlet of the NNP-A.

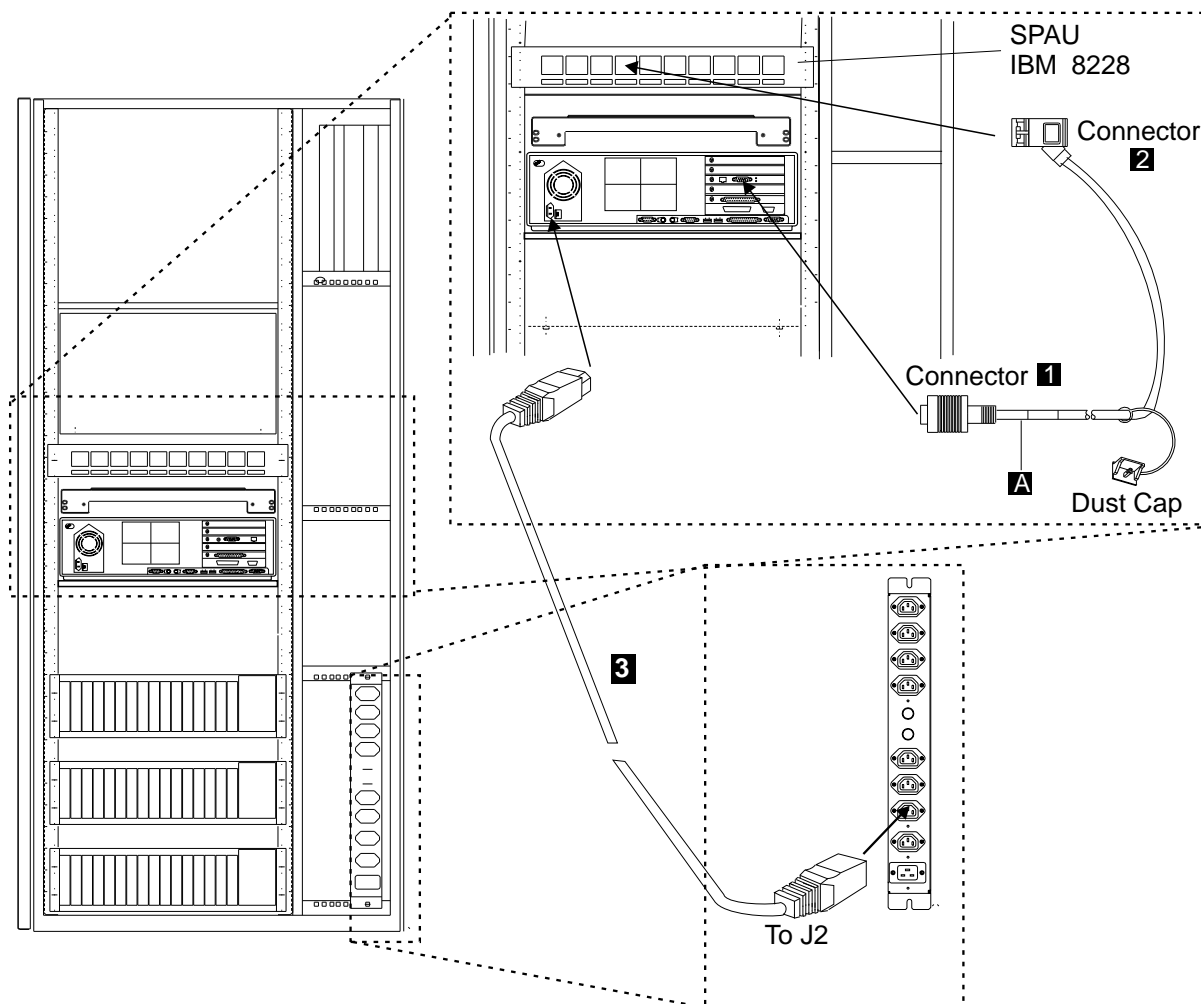


Figure 10. Connecting the 7585 NNP-A

### On the NNP-B Front Site:

- \_\_\_ 4. Open the access door, then press the Power button to **Switch ON** the processor.

**Note:** For any unexpected message or error concerning the NNP-A, go to **Chapter 3. Network Node Processor Problem Determination** of the

*Network Node Processor Installation and Maintenance Manual.*  
SY33-2111.

## 10.4 Installing the Code on the Network Node Processor

- 1. Double click on the 3746-900 icon where you are going to install the APPN feature.
- 2. From the 3746-9x0 menu, click on **Network Node Processor (NNP) Management**.
- 3. Double click on **(M) Install/Remove/Change/Restore LIC/NNP**.
- 4. Select **NNP-A**, then click on **Install NNP**.
- 5. Click on **OK**.
- 6. If necessary, modify the **IP address** and the **Subnet mask** for the service processor and the network node processor according to the values recorded by the customer on the parameter worksheet. Otherwise keep the default values and record the hostnames for later use. Then, Click on **OK**.

	IP address	Subnet mask	Hostname
Service Processor:	192.9.200.1	255.255.255.240	SP34567
NNP-A:	192.9.200.2	255.255.255.240	CA034567
NNP-B:		255.255.255.240	CB034567
3746 NN:	192.9.200.4	255.255.255.240	

OK Cancel Help

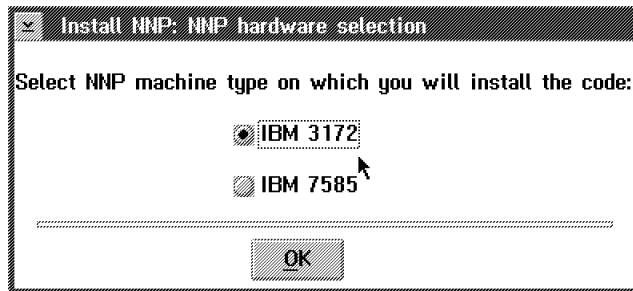
- 7. Insert the **Network Node Processor installation diskette** in the diskette drive of the **service processor**. Then, click on **OK**.

821V03.0/3746-9x0/NNP Licensed Internal Code [LIC] Management

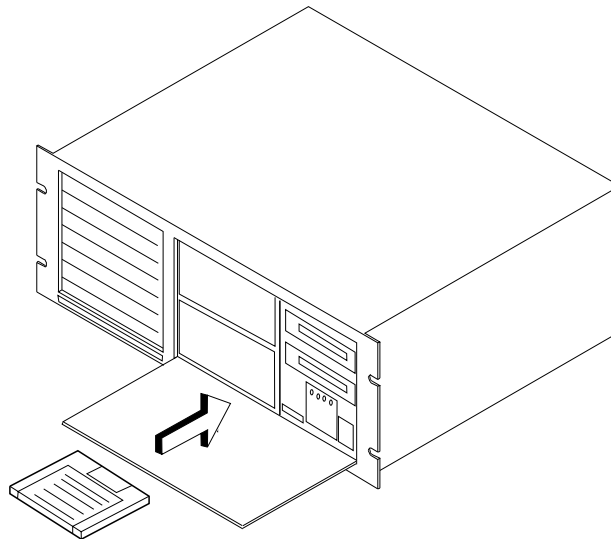
**i** Please insert the Network Node Processor Installation Diskette in the Service Processor Drive A.

OK

- \_\_\_ 8. Select the type of NNP installed, then click on **OK**.



- \_\_\_ 9. When the process is completed, perform the following steps:
- \_\_\_ 1) Power OFF the Network Node Processor B.
  - \_\_\_ 2) Remove the NNP Installation Diskette from the Service Processor drive A
  - \_\_\_ 3) Insert it in the Network Node Processor drive A.



- \_\_\_ 4) Power ON the Network Node Processor B.
  - \_\_\_ 5) Then click on **OK**.
- \_\_\_ 10. To follow the progress of the installation, read the messages prompted in '**Messages**' box.
- Note:** It takes about 30 minutes to complete the installation
- \_\_\_ 11. As indicated in the following information message, remove the Network Node Processor installation diskette, then click on **OK**.



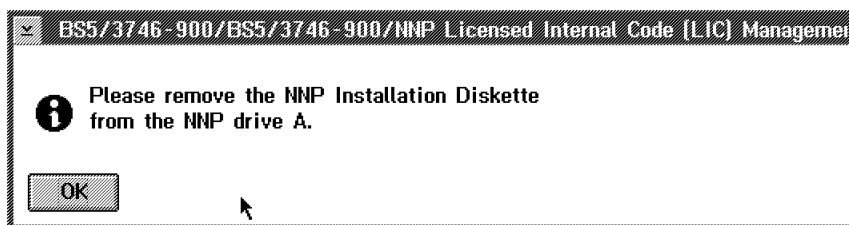


Figure 11. NNP-A Licensed Internal Code Management Information Message

- \_\_\_ 12. The installation is completed, click on **OK**.

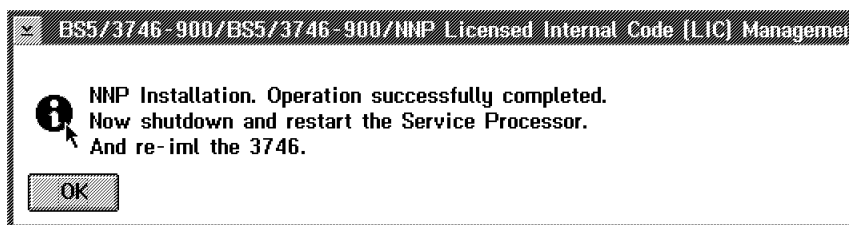


Figure 12. Network Node Processor LIC Management Information Message

- \_\_\_ 13. Click on **Close**.
- \_\_\_ 14. Shutdown and restart the service processor and re-impl the 3746-9x0

## 10.5 Returning the Machine to the Customer

- \_\_\_ 1. Inform the Customer that the machine is now ready to receive the APPN configuration.

## 11.0 Test Procedures

No test required.

## 12.0 Field Updating

None.

3746 FFBM	PN 08J5496 17 of 18	EC E46545A 07 MAY 97				
--------------	------------------------	-------------------------	--	--	--	--

---

## After Installation (steps 13-15)

### 13.0 Field Updating

None.

### 14.0 Publications Update

None.

### 15.0 Parts Disposition

#### 15.1 Purchased Machines

Refer to the parts ownership matrix to determine the correct owner of removed/unused parts.

- For EMEA/APG/AG Areas, refer to *Hardware and General Service Code Description*.
- For Domestic Areas, return parts to the customer.

### 16.0 Machine Records

- Install the new **MACHINE HISTORY** supplied.
- Report installation and quality problems using existing procedures.

**End of instructions.**